

EVENTS ON THE WATERS EDGE...

HISTORICALLY SYDNEY

*WatersEdge*

A DOCKSIDE GROUP VENUE

## SERVICES & FACILITIES

- Breathtaking sweeping views of McMahons Point to the Sydney Opera House
- Heritage listed unique property located at the southern pylon of the Sydney Harbour Bridge
- 500 square metres of flexible space (including the promenade), which can divide into two rooms – the Anchorage and Walsh Bay room.
- Floor to ceiling glass french doors opening out to terrace from the Walsh Bay Room
- Ceiling height raising to 8 metres with original heritage features
- Vehicle access into the venue – suitable for car launches and sponsored events
- Ability to host one large event in the entire venue
- Natural light through floor to ceiling glass windows
- Black out facilities
- Extensive range of restaurant quality menus and beverage selections
- On site commercial kitchen facilities
- Highly experienced on site executive chef, kitchen and venue operations team
- Rooms offer both natural light and automated black out facilities
- Fully air-conditioned
- Secretariat support is available upon request
- State of the art audio-visual equipment and service by Impact AV
- ADSL 2 Internet access and video conferencing facilities

## AUDIO VISUAL FACILITIES MANAGED BY IMPACT AV

### THE ANCHORAGE ROOM FEATURES:

- 1 x Motorised Projection Screen (12ft x 9ft)
- Panasonic 6000 Ansi Lumen Event Data Projector
- Full Venue Professional PA system with Meyer Speakers and Yamaha Pro Amplifiers
- ETC Source 4 Profile Lights and dimmer
- Martin Mac 250 Moving lights with Vista Control

### THE WALSH BAY ROOM FEATURES:

- 1 x Drop Down Screen (6ft x 4ft)
- Acer Data Projector
- Room PA with Martin Speakers and Amp

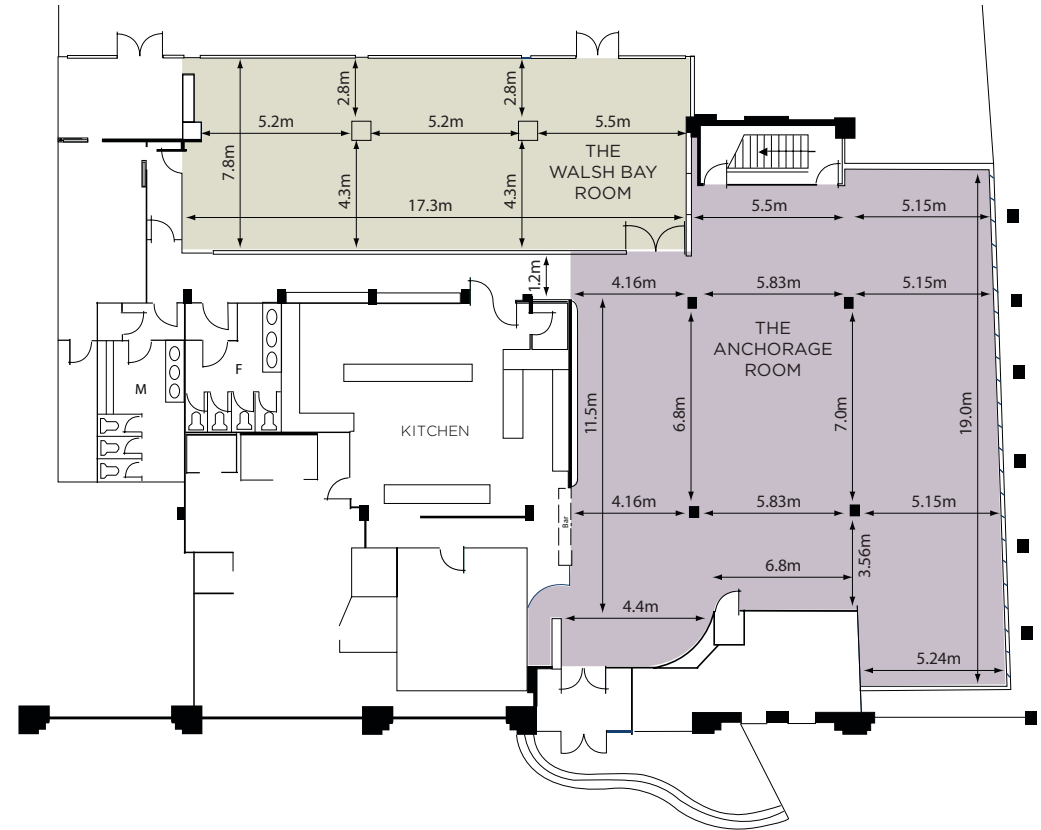
### BOTH ROOMS:

- Portable staging, whiteboards, plasma screens, lecterns, flip charts
- Professional onsite audio-visual technicians to support the seamless running of events

Charges are applicable for all AV equipment and services. Please contact Impact AV on 1300 633 328 or visit [impactav.com.au](http://impactav.com.au) for a quotation.

## LOCATION & LANDMARKS

- The venue is located in the Walsh Bay precinct
- 10-minute walk from Sydney Theatre Company and the Rocks precinct
- 5-minute walk from two 4.5 star hotels and a 5 star hotel
- 2-minute walk from the Cockle Bay Wharf Marina for water taxi
- 10-minute walk to two parking stations
- Taxi and coach drop off points right outside the venue on Hickson Road



WATERSEDGE	Measurement (Sqm)	Ceiling Height (m)	Cocktail	Banquet	Banquet w/ Dance Floor	Theatre	Cabaret	Classroom
Entire venue	440	na	700	400	330	240	176	120
The Anchorage Room	260	6	450	250	210	200	152	100
The Walsh Bay Room	180	2.3 - 2.8	250	150	120	100	64	50

\*Banquet is with dance floor and bridal table.  
All capacities may vary depending on audio visual, production, entertainment and catering requirements. Our sales and event management team members will assist you with a floor plan tailored to your event's specifications. This venue's banquet table is round and the measurement is 1.6m (radius). Each banquet table sits 10 persons comfortably. Cabaret style up is based on 7 persons per table utilising this venue's banquet table. This venue's classroom table measure is 1.8m X 0.45m. Each classroom table sits 3 persons comfortably.